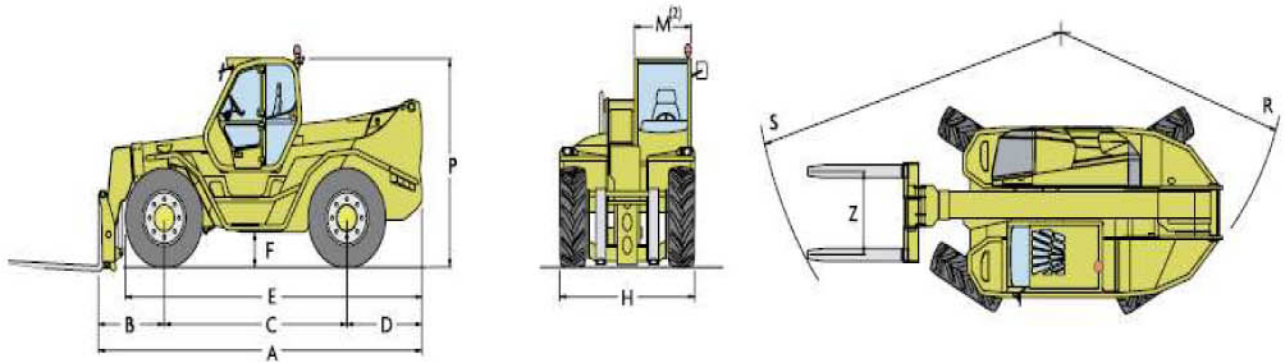


MERLO P 101.10 HM



PANORAMIC		P 101.10 HM
Weight		
Total empty weight (with forks)	kg	15200
Performance		
Maximum rated capacity	kg	10000
Maximum lift height	m	9.8
Maximum forward reach	m	5.7
Maximum height at maximum load	m	7.1
Forward reach at maximum load	m	1.8
Lift capacity at full lift height	kg	5000
Lift capacity at maximum forward reach	kg	2750

Dimensions P 101.10 HM		
A	mm	5740
B	mm	1160
C	mm	3240
D	mm	1335
E	mm	5235
F	mm	450
H	mm	2400
M ⁽²⁾	mm	995
P	mm	2850
R	mm	4300
S	mm	5700
Z	mm	635+1170

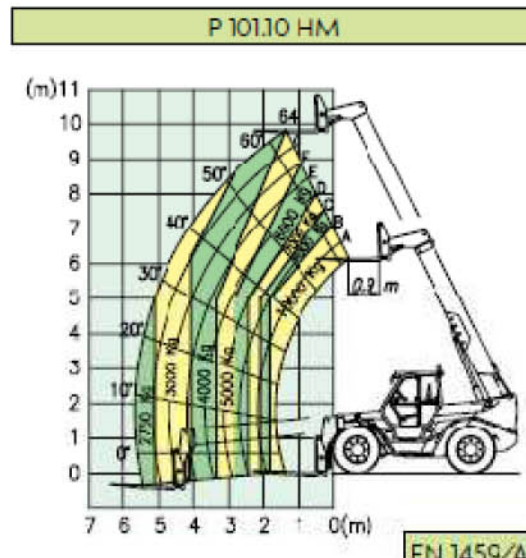
WINNER HANDLING

SUSSEX: 01903 230700

SURREY: 01483 456789

EMAIL: SALES@WINNERHANDLING.CO.UK

MERLO P 101.10 HM



Cab

- In compliance with ISO 3449 (FOPS) and ISO 3471 (ROPS) directives.
- '6 in 1' proportional electronic joystick control.

Boom

- Telescopic with sections sliding on adjustable anti-friction pads.
- Hydraulic extension system mounted internally inside the boom for maximum reliability and protection.
- Integrated hydraulically operated device for side shift.

Tool-carrier carriage

- Hydraulic quick coupling/detachment device directly controlled from the cab.
- Standard double acting hydraulic service at boom head for hydraulic attachment operation.

Forks

- Of floating type: length 1800 mm. Section 200 x 80 mm (on P 45.18 HM and P 65.14 HM length 1200 mm, section 125 x 45 mm).
- The fork spread is manually adjustable.

Steering

- Four wheel steer, with three steering modes selected from the cab.

Engine

- 6 cylinder turbo intercooler Nef low emissions (Euro 2) diesel engine, with electronically regulated direct injection, water cooling and rated at 107 kW (145 HP) at 2300 rpm (97/68/CEI).

Transmission

- Hydrostatic with electronically regulated variable displacement motor.
- Automatic and continuous speed variation from standstill to maximum speed, simply by operating the accelerator pedal.
- Electrically operated two speed range gearbox.
- Finger-Touch system which permits change in driving direction even when the machine is moving, without the operator having to remove his hands from the steering wheel.
- Permanent four wheel drive traction.

Brakes

- Hydraulically controlled oil immersed disc service brakes.
- Automatic hydraulic park brake with hydraulic release feature.

Hydraulic system

- Load-Sensing type.
- Variable displacement axial hydraulic pump.
- Maximum flow: 138 l/min.
- Service pressure: 230 bar.

Electrical system

- 12 V, 160 Ah battery and 90 A alternator.
- Road lighting complete with rotating beacon.

Capacities

- Hydraulic system: 180 l
- Fuel tank: 185 l
- Hydrostatic oil: 12 l
- Engine oil: 12 l
- Engine cooling: 12 l

Tyres

- 17.5-25 22 PR

Options

- Radio-control for material lifting operations.
- Cab mounted working lights.
- Front screen guard.
- Prearrangement for attachments requiring two hydraulic services.
- Antitheft system with immobilising device.
- Air conditioning.

WINNER HANDLING

SUSSEX: 01903 230700

SURREY: 01483 456789

EMAIL: SALES@WINNERHANDLING.CO.UK