



# MANITOU MT 932

## MT 932


 **Lifting capacity** .....3200 kg  
at 500 mm from forks heels.  
Tipping load  
at maximum reach : .....673 kg  
Tear out force with bucket  
to ISO 8313 .....7400 daN


 **Lifting height** : .....9.00 m  
**Times** : unladen / loaded (in s)  
Lifting .....6.7/7.3  
Lowering .....5/4.7  
Simultaneous extension 1st and 2nd booms ..12.2/13.3  
Simultaneous retraction 1st and 2nd booms.....8/7.6  
Time unladen (in s)  
Crowd .....2.8  
Dump .....2.3


 **Tyres**  
400/80 - 24 TL 156 B

 **Forks** (mm)  
Length.....1200  
Width x thickness .....125 X 45  
Maximum distance between forks.....1040  
Carriage rotation .....126°


 **Multidisc brakes - hydraulically assisted on both axles**

 **PERKINS Engine**  
Type .....1104C-44  
Capacity.....4 cyl. 4400 cm<sup>3</sup>  
Power at 2200 rpm : .....82 HP/61.5 kw  
(ISO/TR 14396)  
Maximum torque : .....302 Nm at 1400 rpm  
Direct injection  
Water cooling

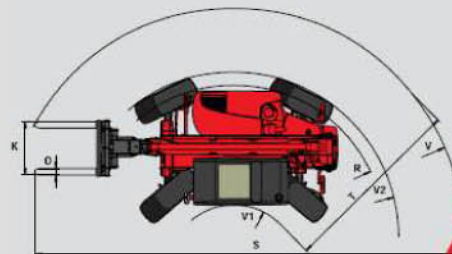
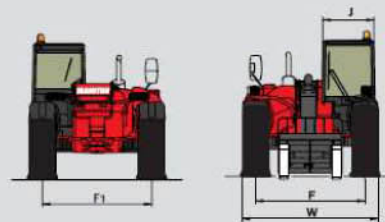
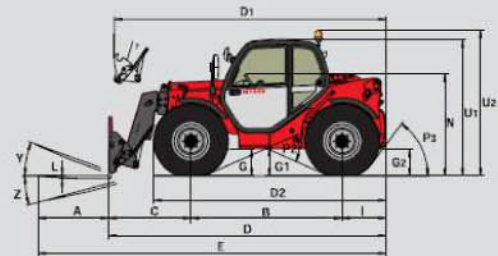
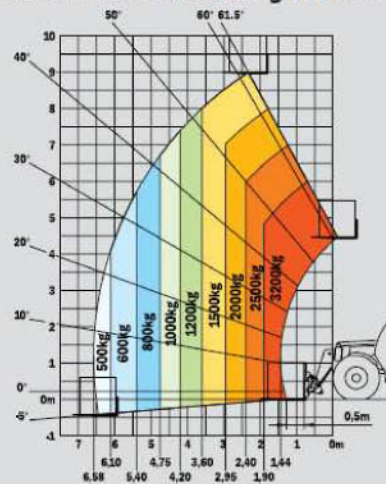
 **Transmission**.....Torque Converter  
Electro - Hydraulic reversing shift  
4 speeds forward and reverse  
Maximum travel speed.....25 km/h

 **Hydraulics**  
Lifting/tilting pump  
gear type : .....240 bars/105 l/mn  
Flow divider with priority to steering and brakes.

 **Capacities**  
Cooling system .....18.5 l.  
Engine oil.....10.5 l.  
Hydraulic oil.....12.5 l.  
Transmission oil .....15.5 l.  
Fuel tank .....120 l.

 **Weight unladen** (with forks) .....7640 kg  
**Overall width** .....2.26 m  
**Overall height** .....2.30 m  
**Turning radius** (outside wheels) .....3.68 m  
**Overall length** .....4.71 m  
**Ground clearance** .....0.44 m  
**Drawbar pull** .....8400 daN

## Reach at maximum height : 2.35 m



A	1200
B	2560
C	1393
D	4716
D1	4811
D2	3908
E	5916
F	1846
F1	1846
G	455
G1	440
G2	440
I	763
J	865
K	1040
L	45
N	1690
O	125
P2	47.5°
P3	53°
R	3460
S	7541
T	3510
U1	2300
U2	2550
V	4760
V1	1250
V2	3668
W	2261
Y	11.9°
Z	113.7°

## WINNER HANDLING

SUSSEX: 01903 230700

SURREY: 01483 456789

EMAIL: SALES@WINNERHANDLING.CO.UK