





MANITOU


MT 1030 S/ST


MT 1030 S/ST


 **Lifting capacity**3000 kg
at 500 mm from forks heels.
Tipping load at maximum reach1160 kg
Tear at force with toothed digging bucket (Iso 8313 - 1986)5330 daN


 **Lifting height**9.98 m
Times: Unladen/loaded (in s)
Lifting6.7/9
Lowering5.2/5.4
Simultaneous extension 1st and 2nd booms ...13.8/14.2
Simultaneous retraction 1st and 2nd booms8.6/7.3
Time unladen (in s)
Crowding3
Dumping2.5

 **Tyres**
400/80 - 24 156 A8 TL

 **Forks (mm)**
Length1200
Width x thickness125 X 45
Maximum distance between forks1040
Carriage rotation126°


 **Hydraulically operated brakes with oil-immersed multi discs on both axes**

 **Perkins Engine**
Type1104C-44
Capacity4 cyl. 4400 cm³
Power (ISO 14396) Atmo:84 HP/61.5 kw
Turbo:100 HP/74.5 kw
Maximum torque Atmo:302 Nm at 1400 rpm
Turbo:412 Nm at 1400 tr/mn
Direct injection
Water cooling

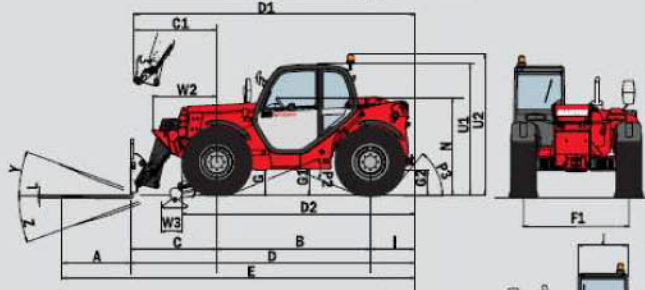
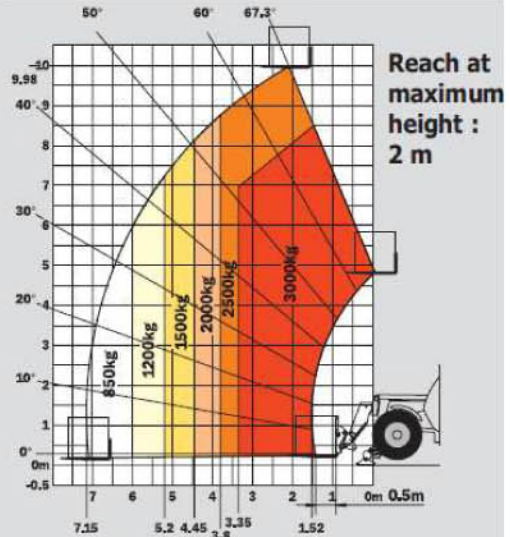
 **Transmission**Torque Converter
Electro - Forward/Reverse selector
4 gears forward and reverse
Maximum travel speed25 km/h

 **Hydraulics**
Gear type:250 bars /105 l/mn
Flow divider with priority to steering and brakes.

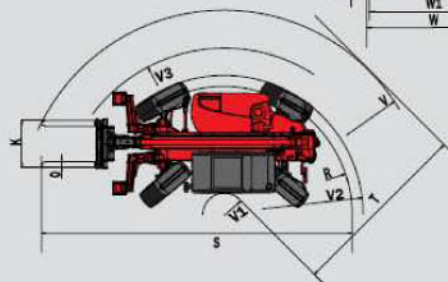
 **Capacities**
Cooling system18.5 l.
Engine oil10.5 l.
Hydraulic oil12.5 l.
Transmission oil15.5 l.
Fuel tank120 l.

 **Weight unladen (with forks)**7470 kg
Overall width2.26 m
Overall height2.30 m
Turning radius (outside wheels)3.75 m
Length up to carriage4.99 m
Ground clearance0.44 m
Drawbar pull8200/8300 daN

Under Norme
EN 1459
annexe B



	mm
A	1200
B	2690
C	1513
C1	1602
D	4992
D1	5081
D2	4064
E	6192
F	1846
G	455
G1	440
G2	440
G3	220
I	789
J	865
K	1040
L	45
N	1690
O	125
P2	44°
P3	53°
R	3545
S	7810
T	3640
U1	2300
U2	2550
V	4950
V1	1310
V2	3753
V3	4200
W	2261
W1	2210
W2	1132
W3	340
Y	12°
Z	114°



- Standard :**
- Beacon
 - Floating forks carriage
 - Attachment hydraulic line
 - Reverse alarm and lights
- Options :**
- Wide range of attachments (buckets, jibs, made to measure attachments)
 - Air conditioning
 - Work lights
 - ...

WINNER HANDLING

SUSSEX: 01903 230700

SURREY: 01483 456789

EMAIL: SALES@WINNERHANDLING.CO.UK