




MANITOU

MLT 523 T

MLT 523 T


 **Lifting capacity**2300 kg
 at 500 mm from forks heels
 Tipping load at maximum reach :1535 kg
 Tear out force with bucket
 to ISO 83134050 daN


 **Lifting height**4.97 m
Times : unladen / loaded (in s)
 Lifting6.27/6.5
 Lowering4.64/4.54
 Boom extension4.62/4.83
 retraction3.55/3.84
 Time unladen (in s)
 Crowd3.02
 Dump2.51


 **Tyres**
 12.5 - 80 - 18 SGI
 Option 10.5 - 18 TG 42 10 PR

 **Forks (mm)**
 Length1200
 Width125


 **Oil bath multidisc brakes on front axle**

 **Engine KUBOTA STAGE III A**
 TypeV3307 D1-T
 Cylinder4/3331 cm³
 Power (ISO 3046-1)
 Turbo75 HP/55 Kw
 Maximum torque265 Nm at 1500 tr/mn
 Direct injection
 Water cooling

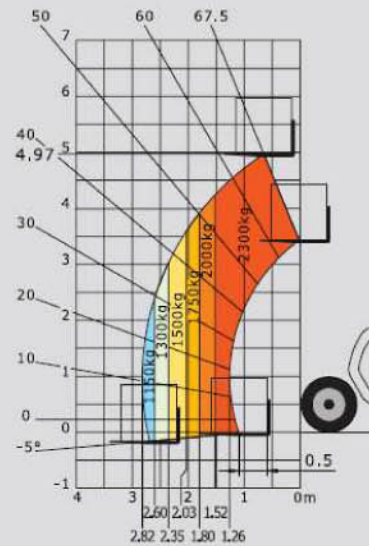
 **Transmission**hydrostatic
 Electro - hydraulic reversing shift
 One speed forward and reverse
 Maximum travel speed up to25 km/h*

 **Hydraulics**
 Lifting/tilting pump : gear type : ...89 l./mn à 260 bars
 Flow divider with priority to steering

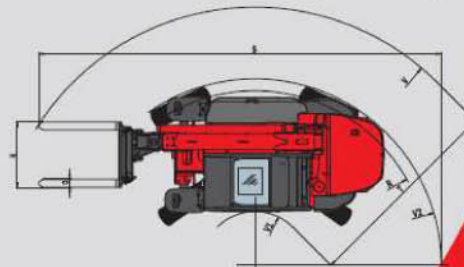
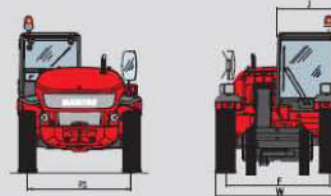
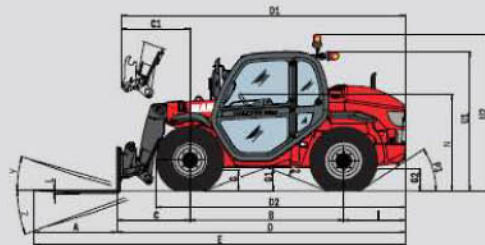
 **Capacities**
 Cooling system13.7 l.
 Transmission oil123 l.
 Engine oil11.2 l.
 Fuel tank94 l.

 **Weight unladen (with forks)**5240 kg
Overall width1.80 m
Overall height1.98** or 2.01 m
Turning radius (outside wheels)3.02 m
Overall length4.20 m
Ground clearance0.30 m
Drawbar pull3495 daN

Reach at maximum height : 0,64 m



Under EN 1459 annexe B



	MLT 523 Turbo
A	1200
B	2230
C	1069.5
C1	1005
D	4204.5
D1	4140
D2	3626
E	5404.5
F	1500
F1	1500
G	305
G1	355
G2	325
I	905
J	865
K	1020
L	45
N	1410
O	125
P2	39°
P3	31°
R	2870
S	6409
T	3130
U1	2010
U2	2300
V	4125
V1	995
V2	3025
W	1809
Y	12°
Z	120°

** Tyres : 10.5 - 18

(mm)

WINNER HANDLING

SUSSEX: 01903 230700

SURREY: 01483 456789

EMAIL: SALES@WINNERHANDLING.CO.UK